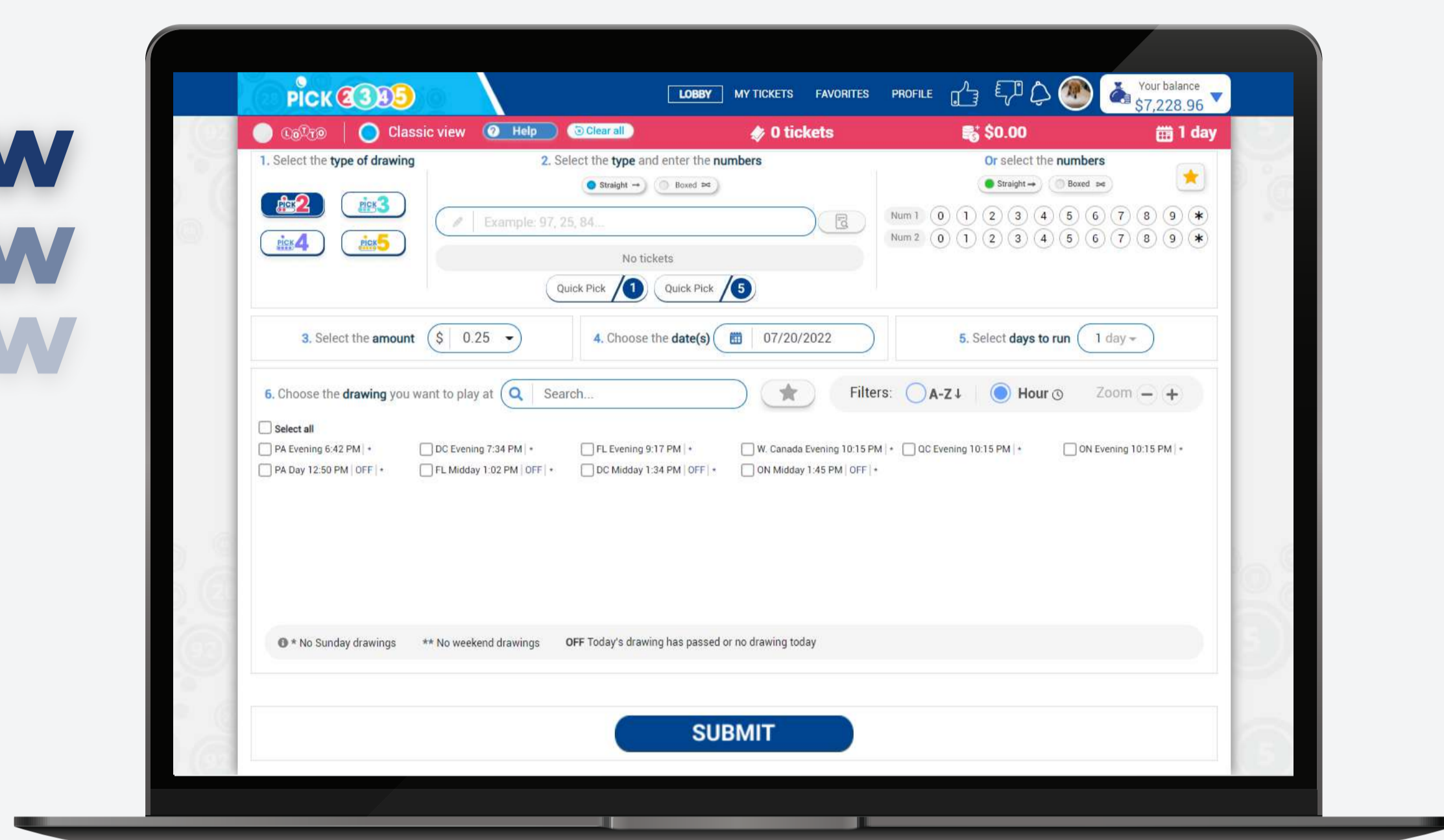


# How to play

## Desktop

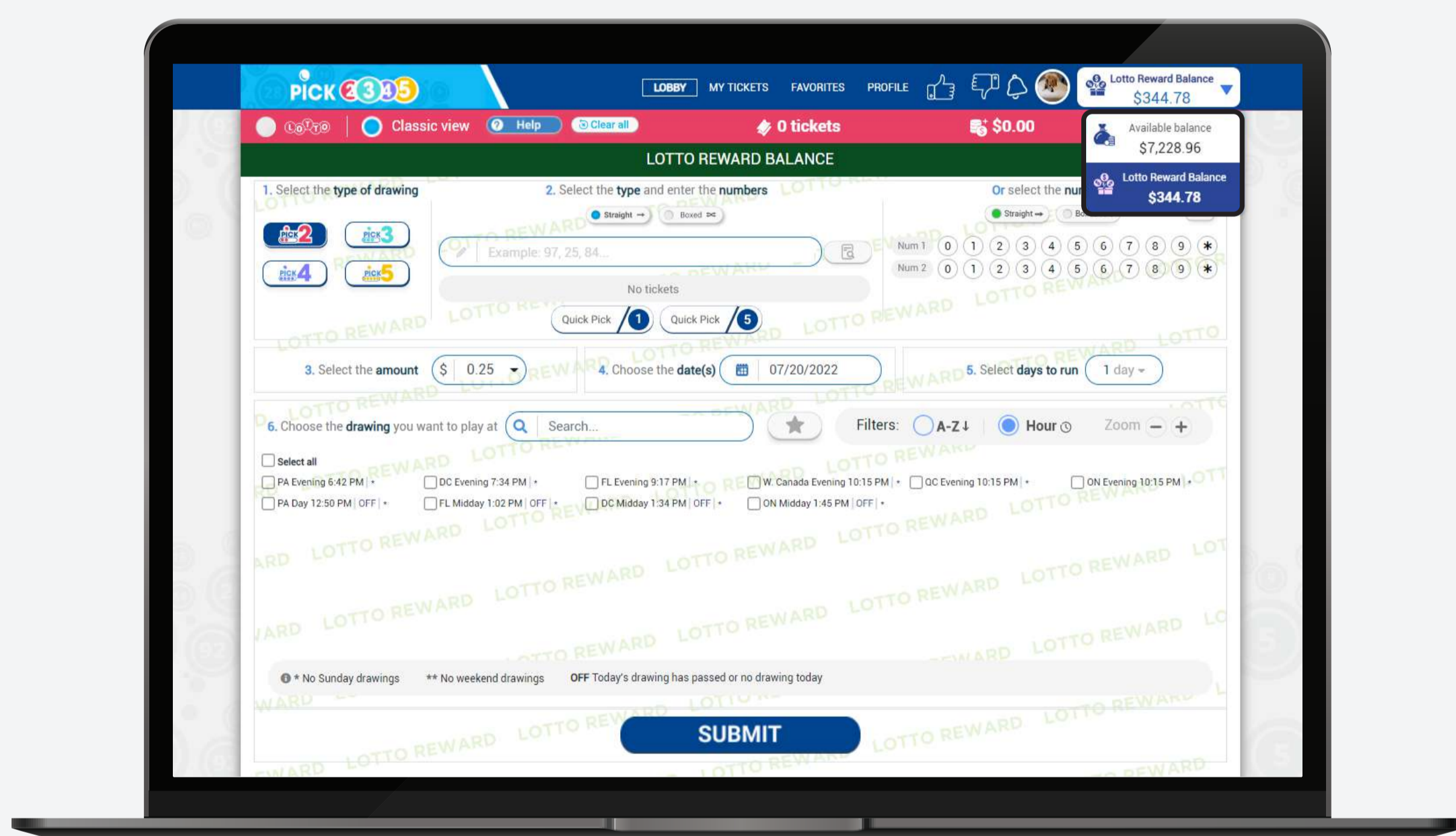


Classic View  
Classic View  
Classic View



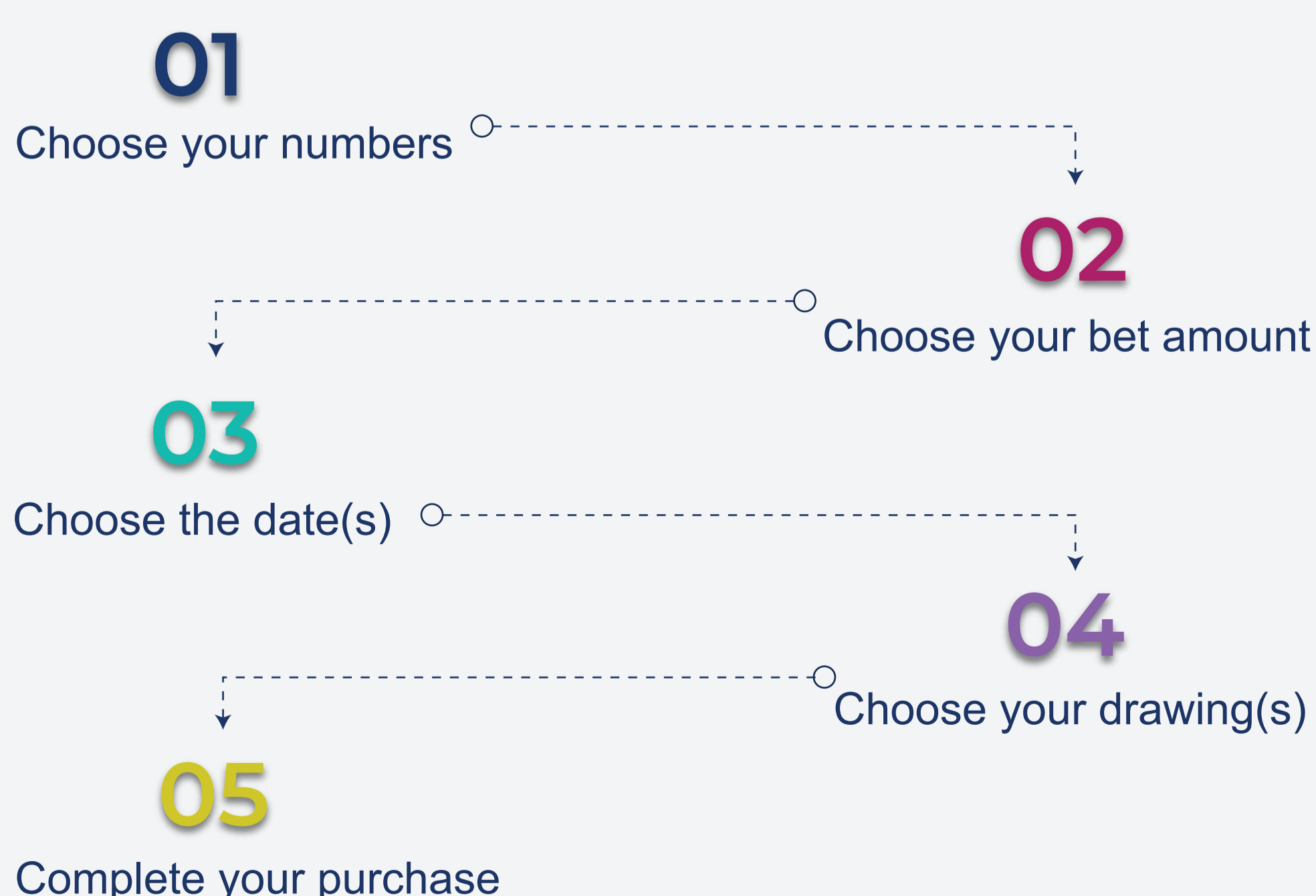
## Lotto Reward

You can choose if you want to use your balance or the lotto reward balance to buy your numbers at any step of the purchase process. Just select the option that you want to use on the top right corner of the Lotto room.



Classic View allows you to see all the steps on one screen. Depending on your play style, you can select the view.

## How to purchase your tickets



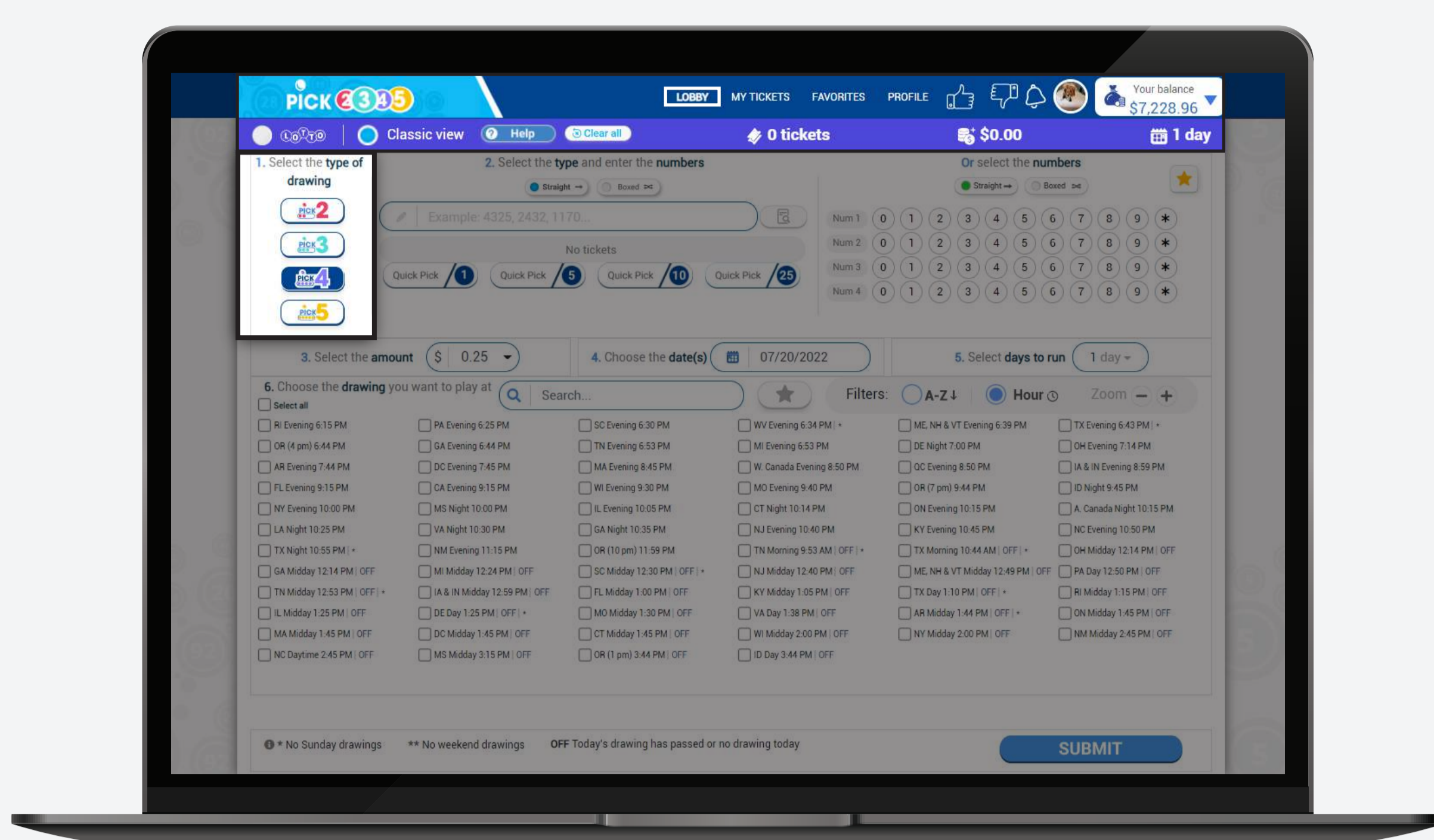
Follow the steps to complete your purchase:



# 01 Choose your numbers

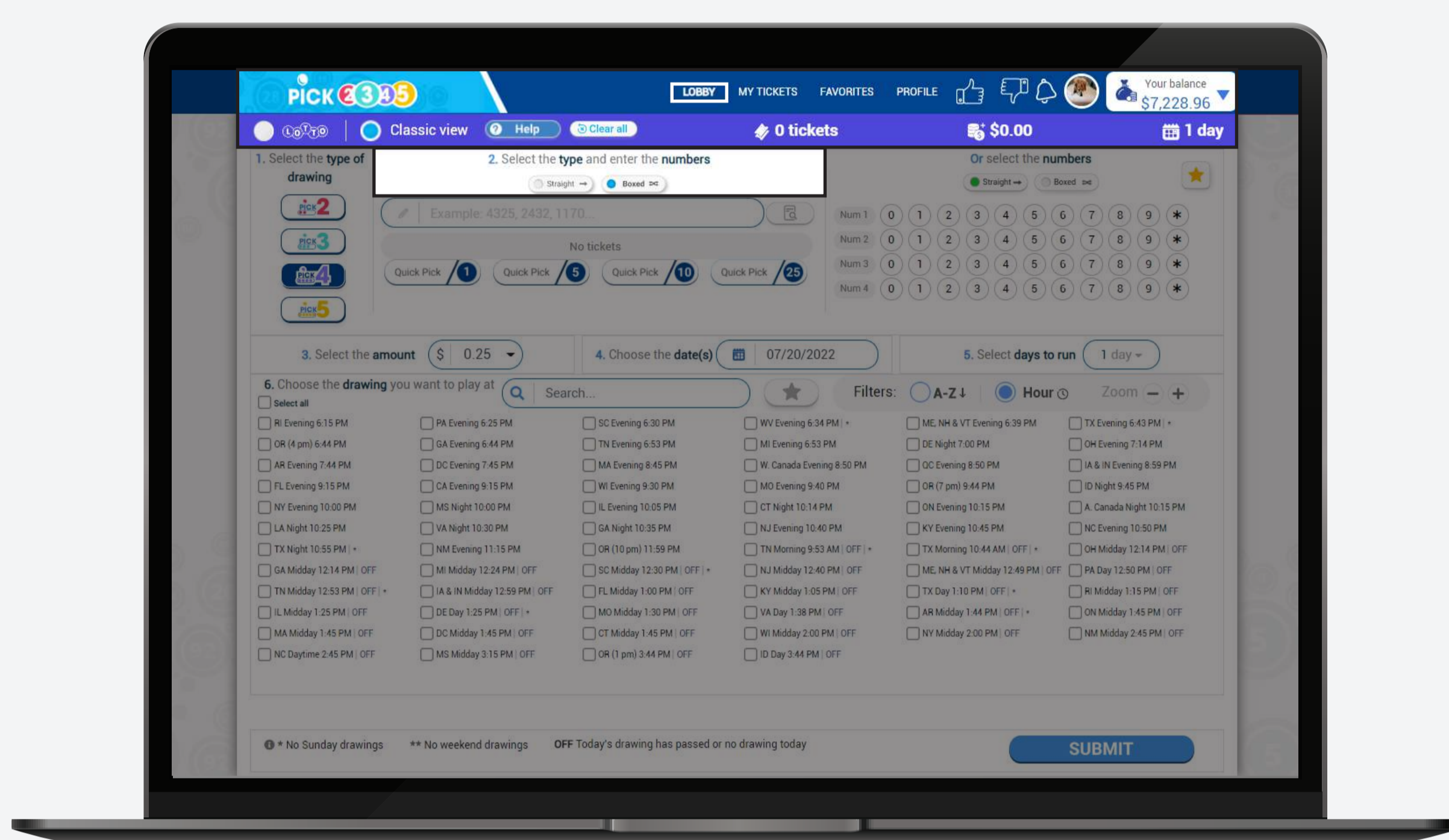
## Type of drawing

Select the pick of your preference; Pick 2, Pick3, Pick 4 or Pick 5



## Type of ticket

Select the type of ticket, either straight or boxed.

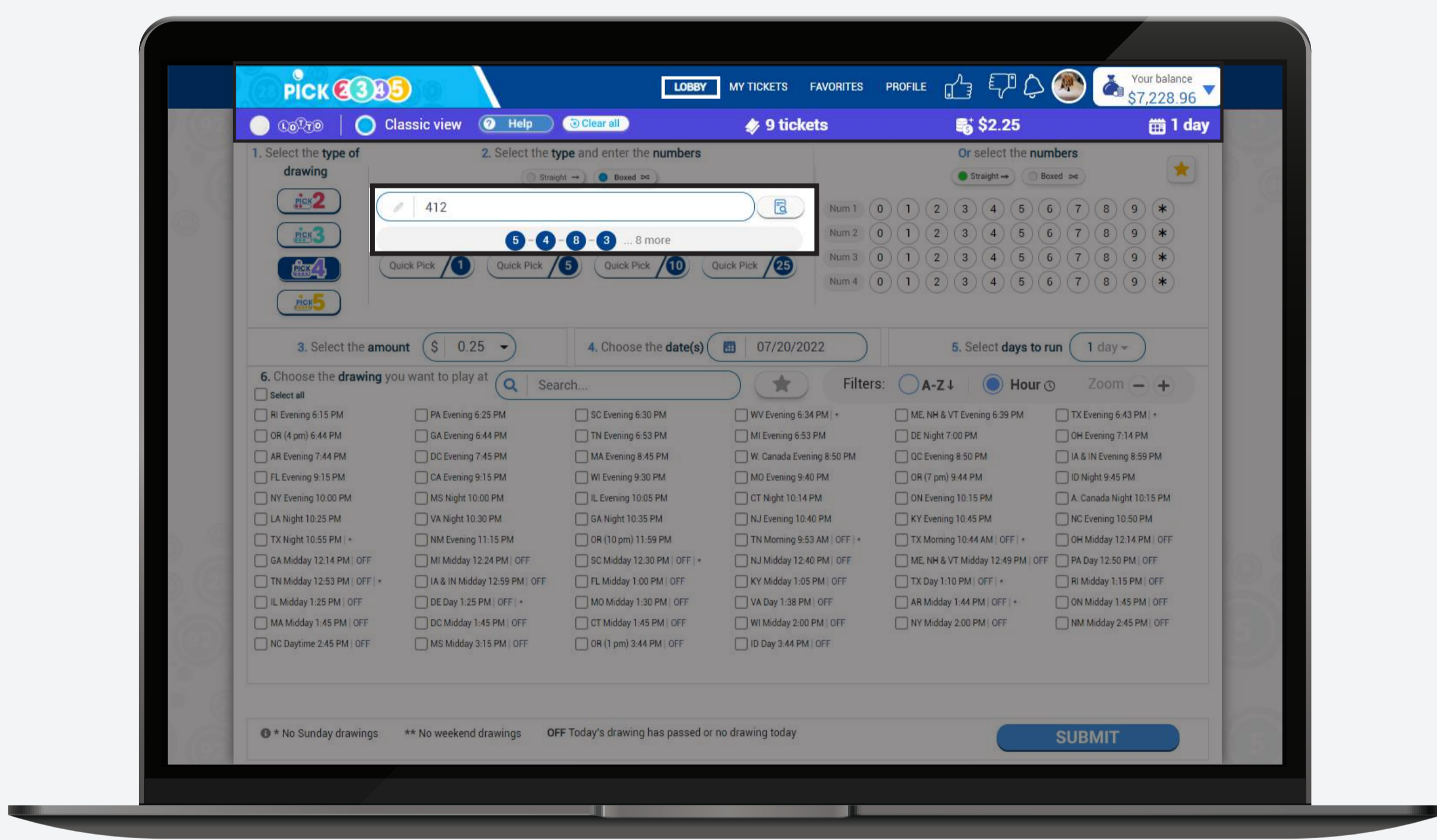
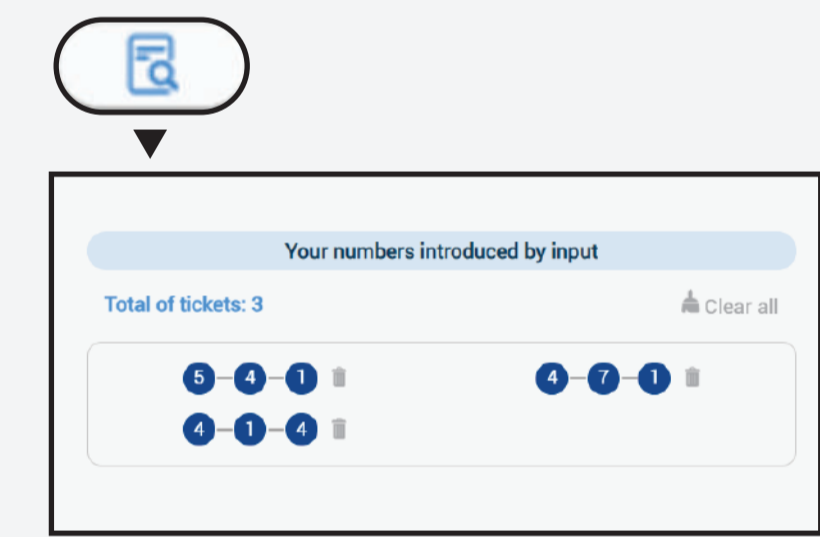


## Method and numbers

You have four ways of picking your numbers:

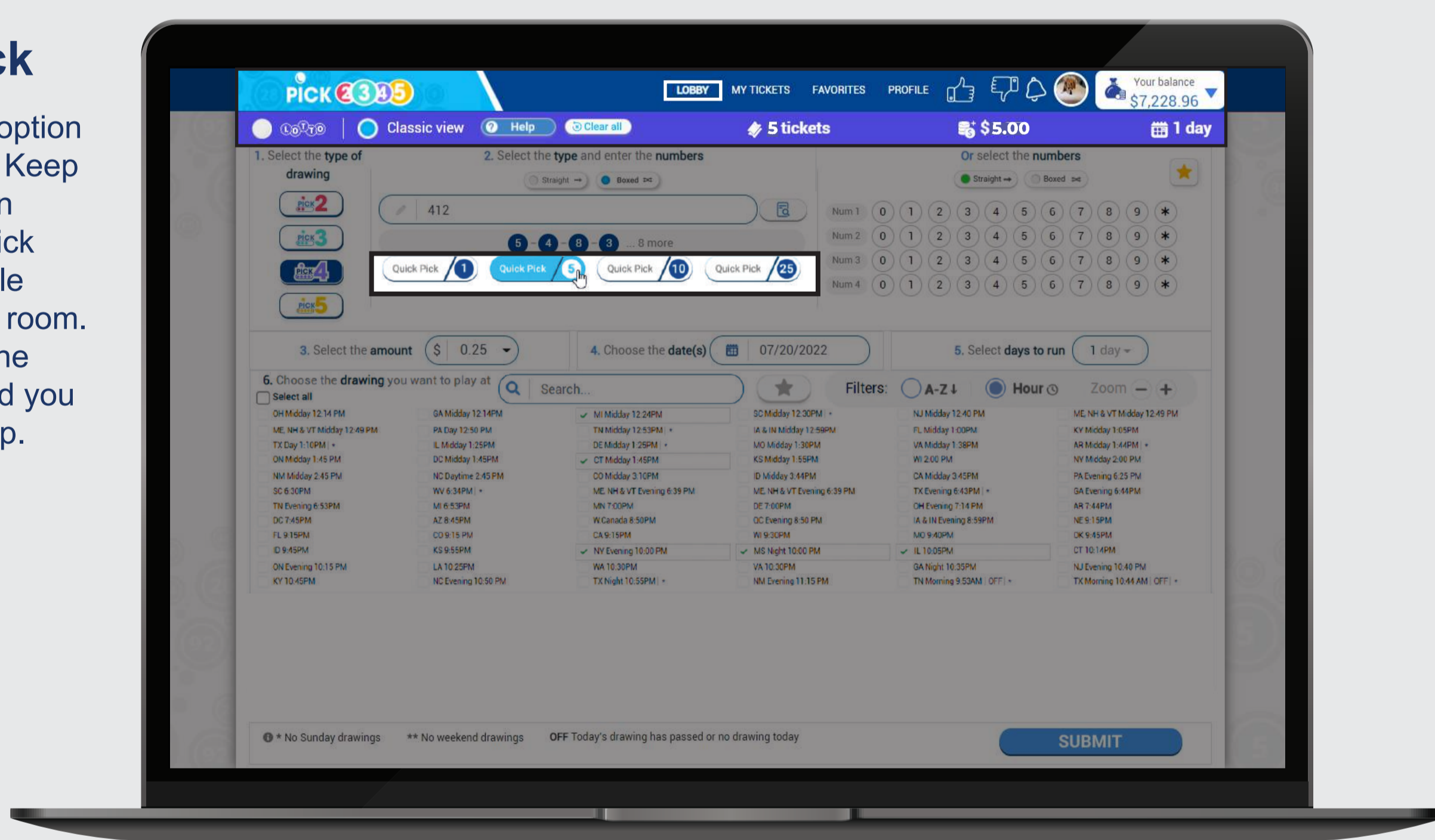
### 1. Input

Type the numbers that you want to play, or paste them from a document. If you click on the following icon, you will be able to see your numbers introduced by input.



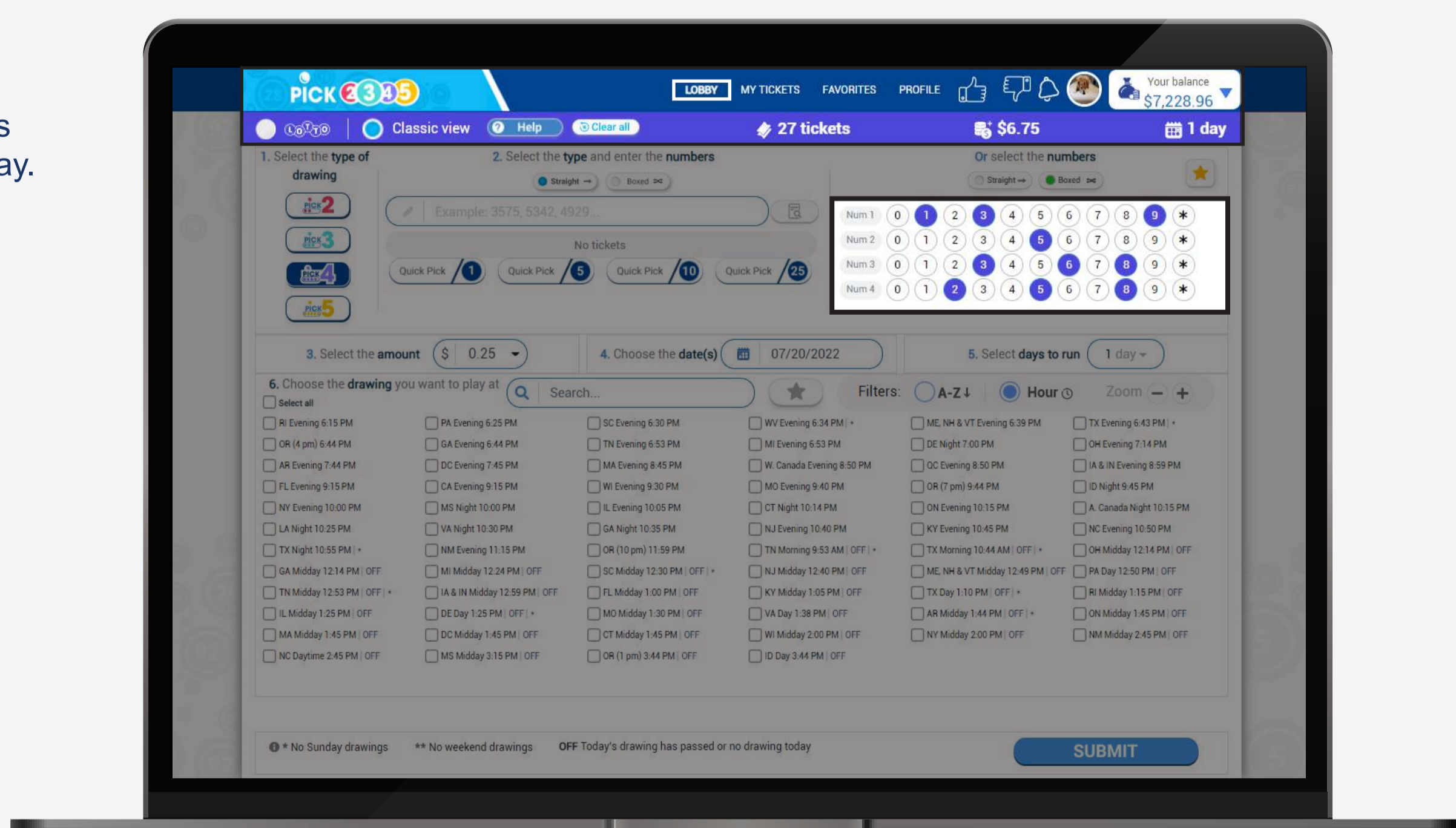
### 2. Quick Pick

Use the quick pick option of your preference. Keep in mind that you can change the quick pick options on the profile section of the Lotto room. Once you choose the quick pick it will lead you to the purchase step.



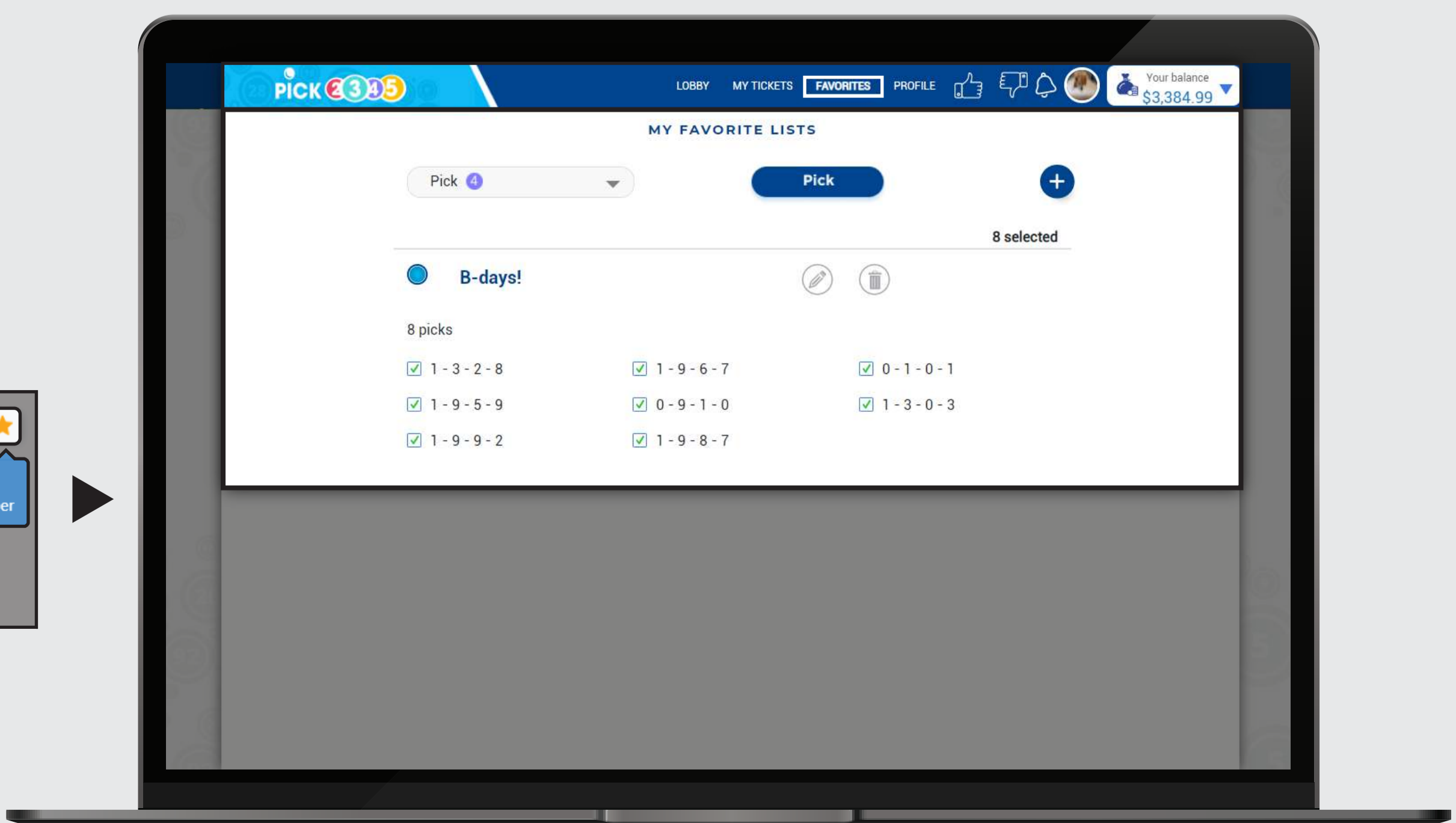
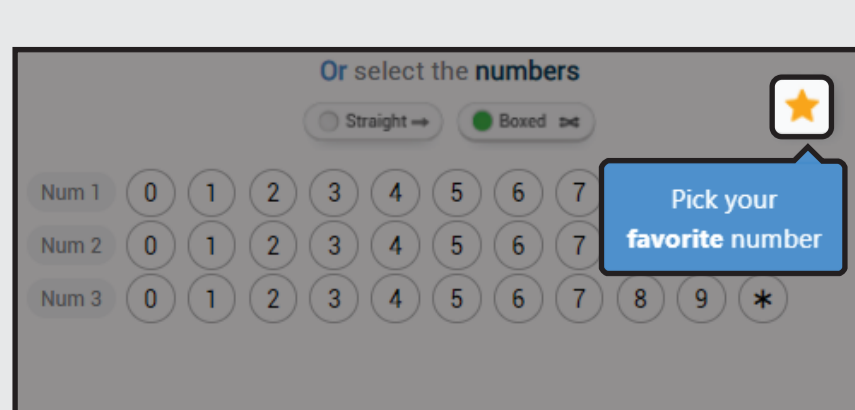
### 3. Numbers

Select the numbers that you want to play.



### 4. Favorites

Click on the star icon to be redirected to your favorite numbers and select an existing list or create a new one.

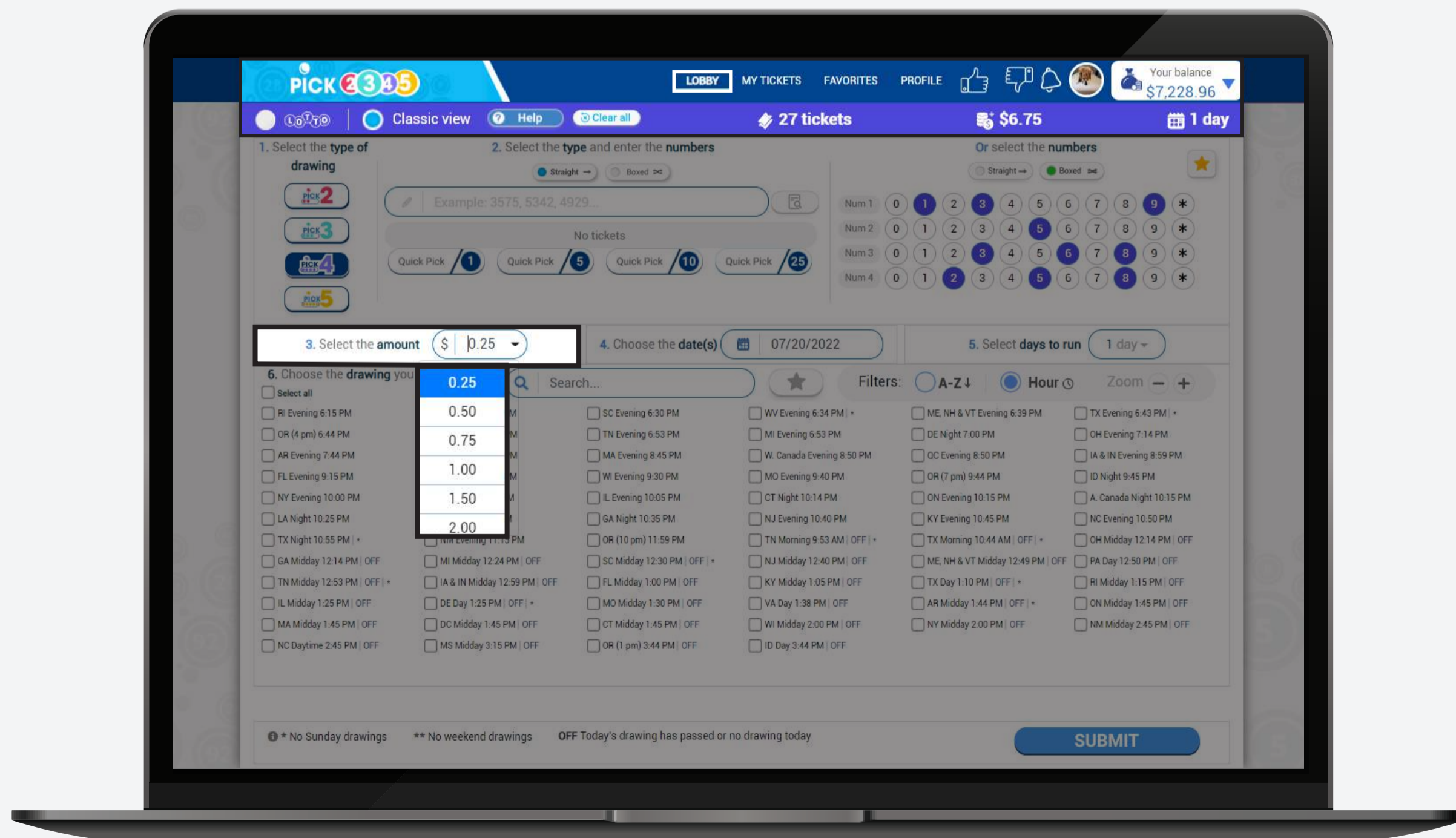




# 02

## Choose your bet amount

Choose the bet amount from the predefined options or type in any other amount in the field. **The minimum bet amount is \$0.25 and the maximum will depend on the type of drawing selected.**





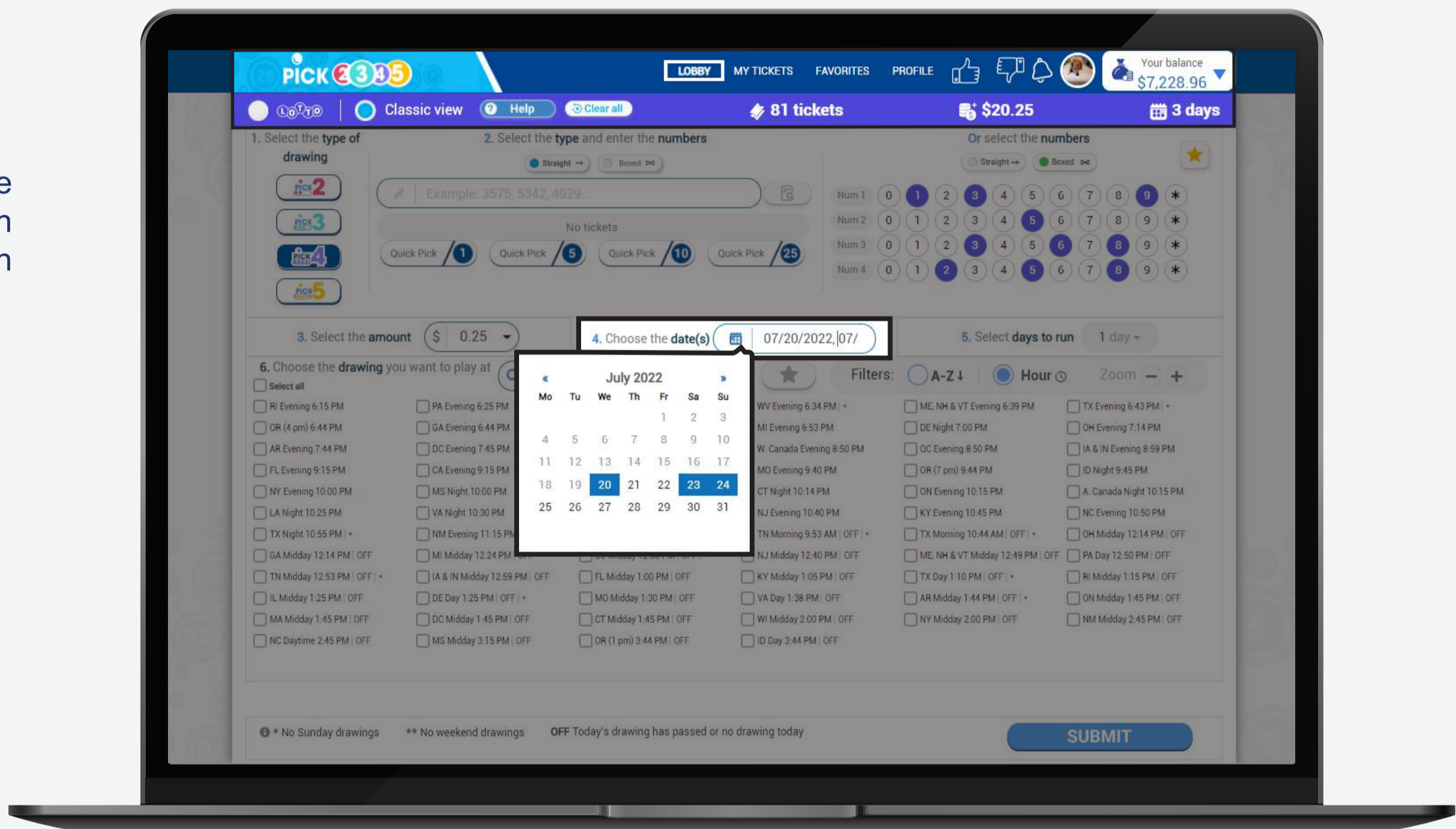
# 03

## Choose the date(s)

You have two ways of choosing your date(s):

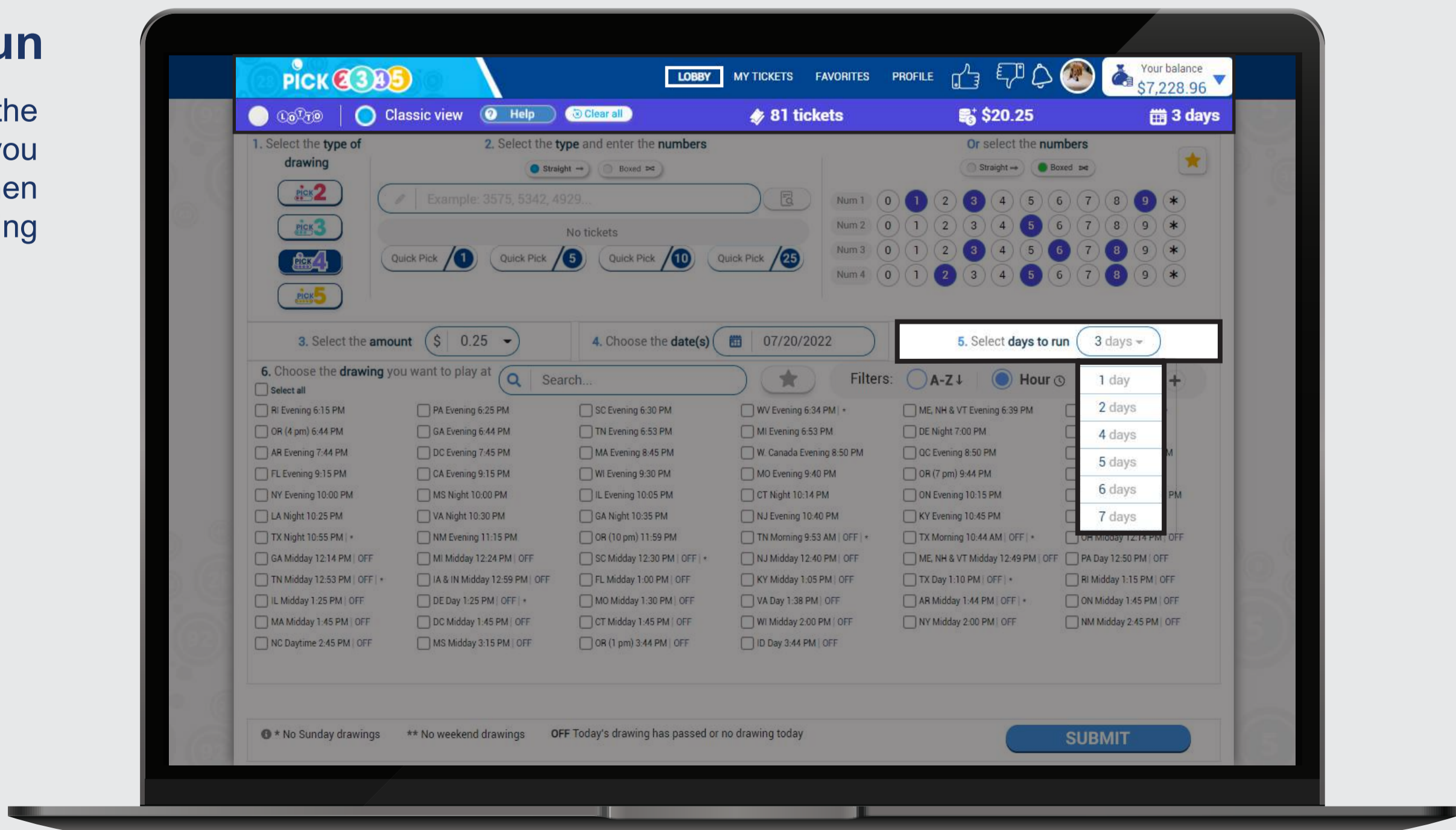
### 1. Choose the date(s)

You can select the days you want to run by clicking on each day.



### 2. Days to run

You can select the number of days you want to run and then the start running date.

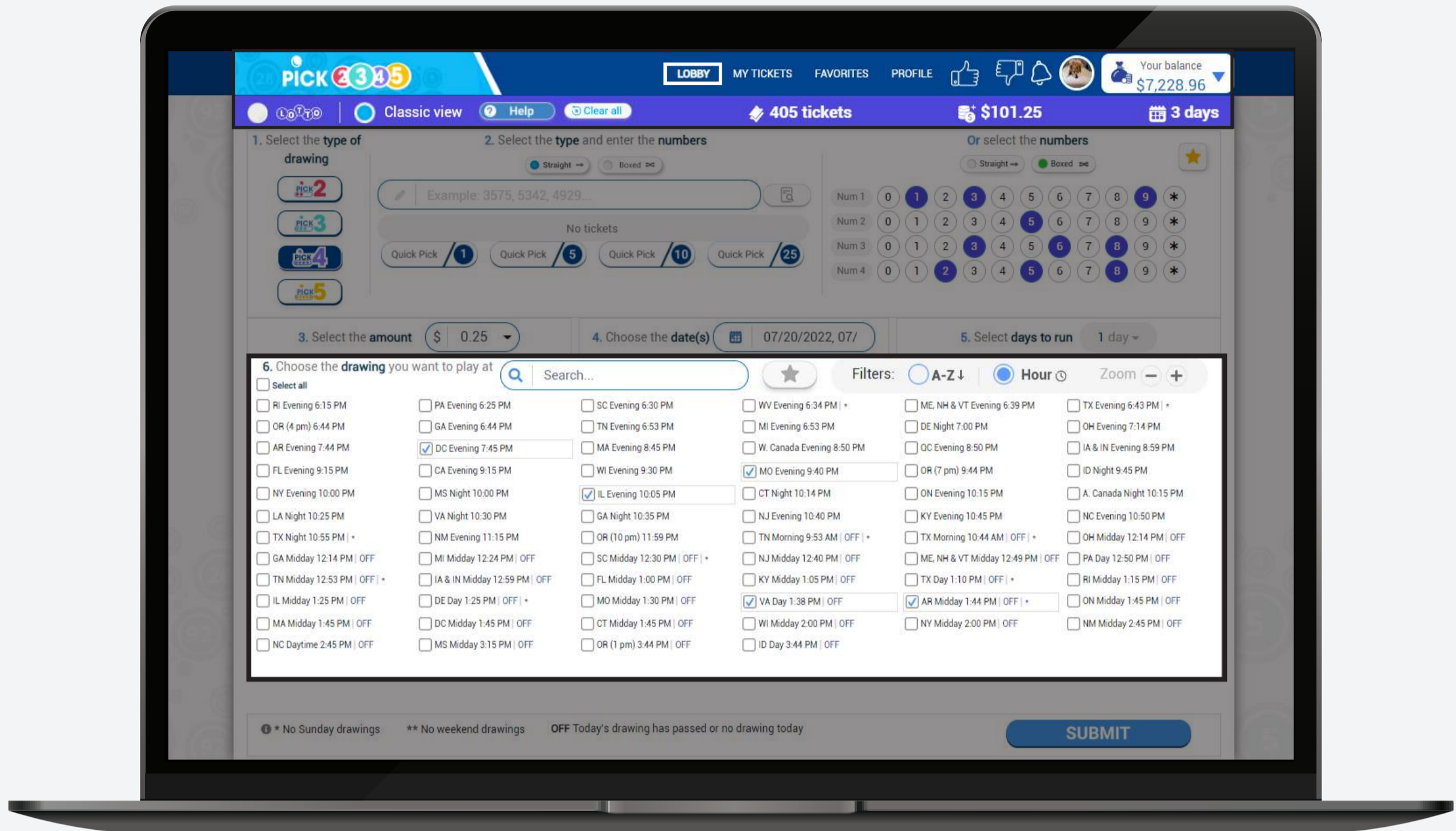




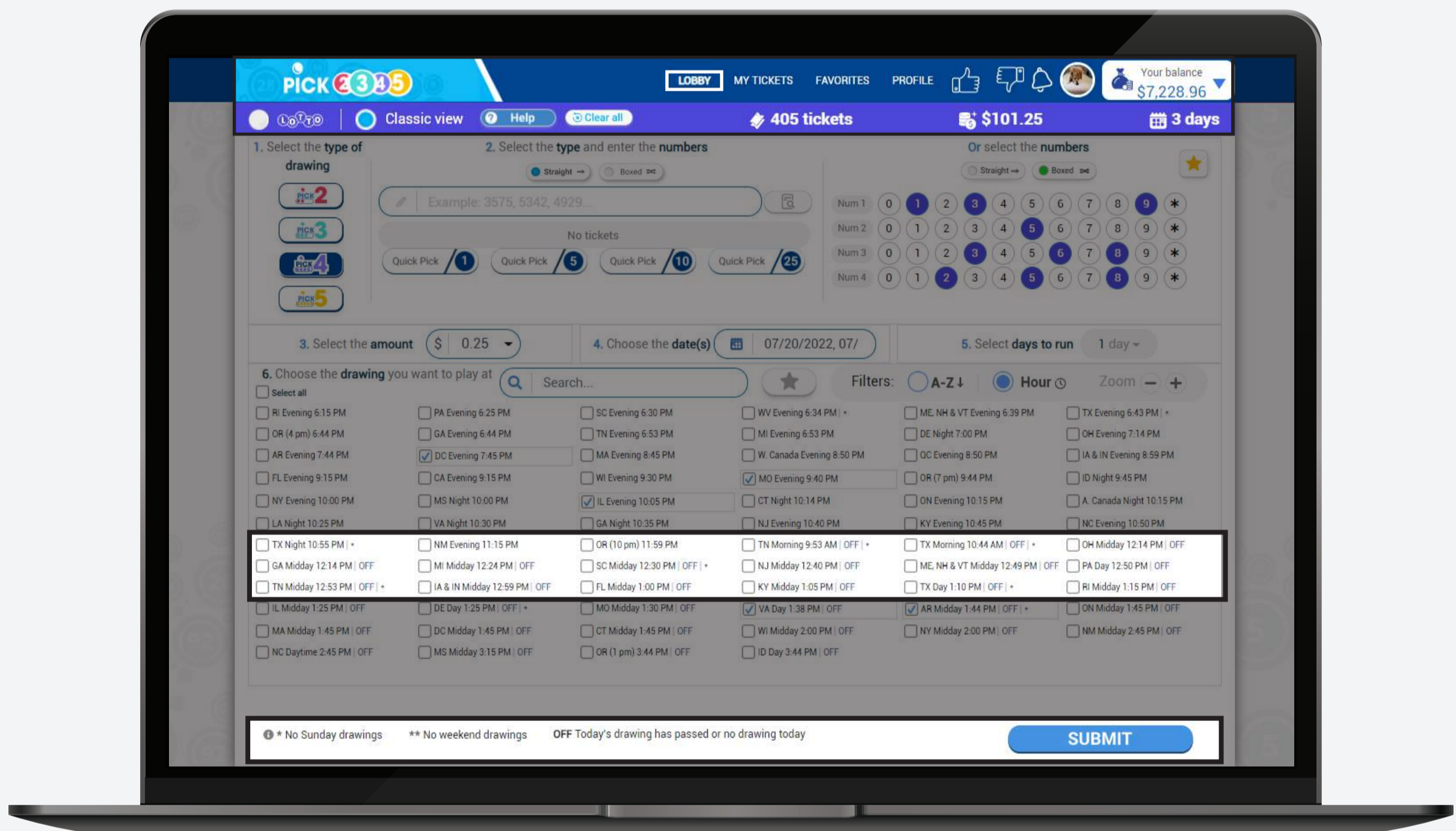
# 04

## Choose your drawings

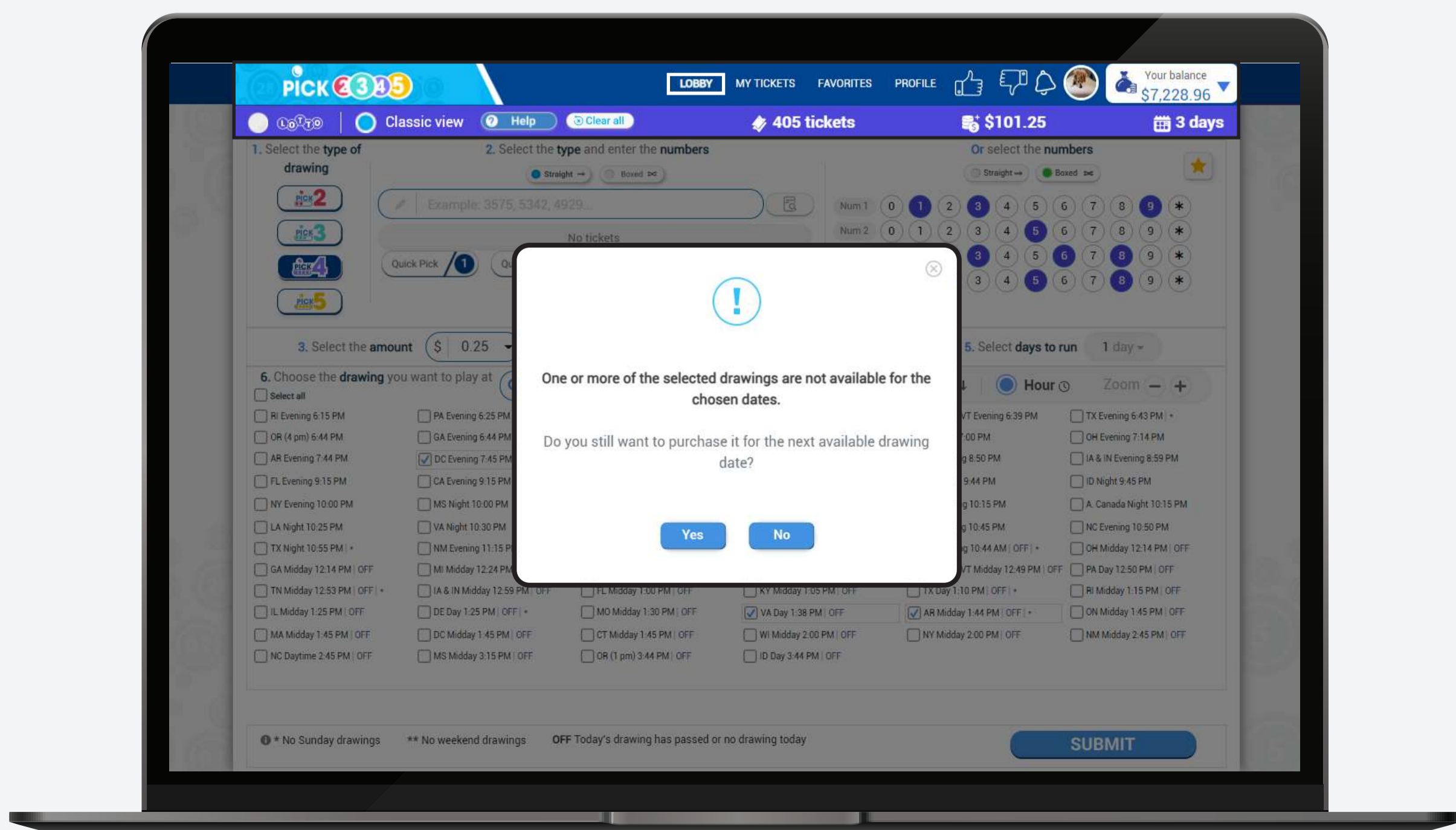
Mark the boxes of the drawing(s) you want to play. A blue check mark will appear on the selected drawing(s).



Please check the symbol(s) next to each drawing and its meaning.



If you selected a drawing that is not available for the chosen date(s) or it has passed, you will be asked if you want to buy it for the next available date instead.

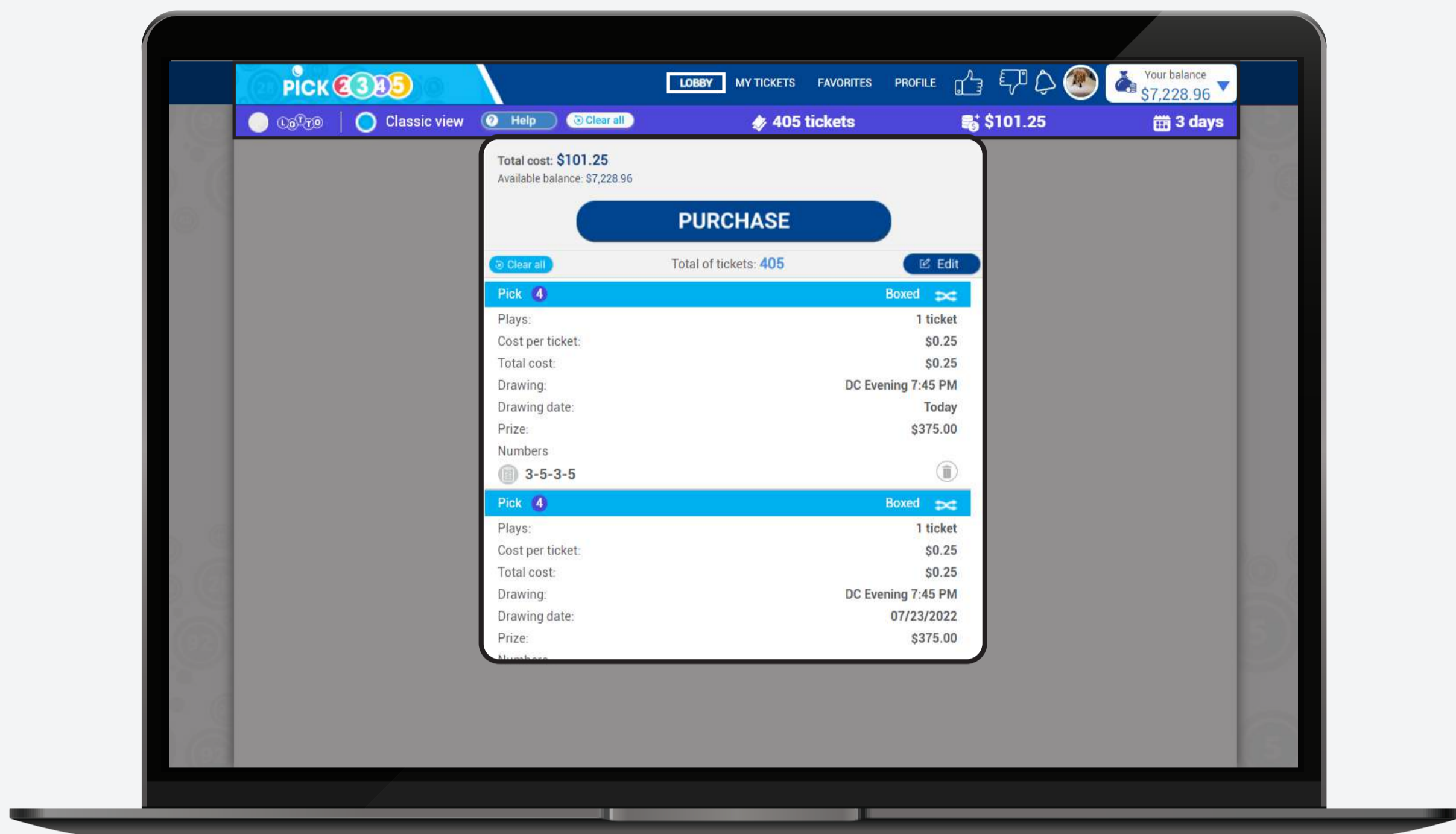




# 05

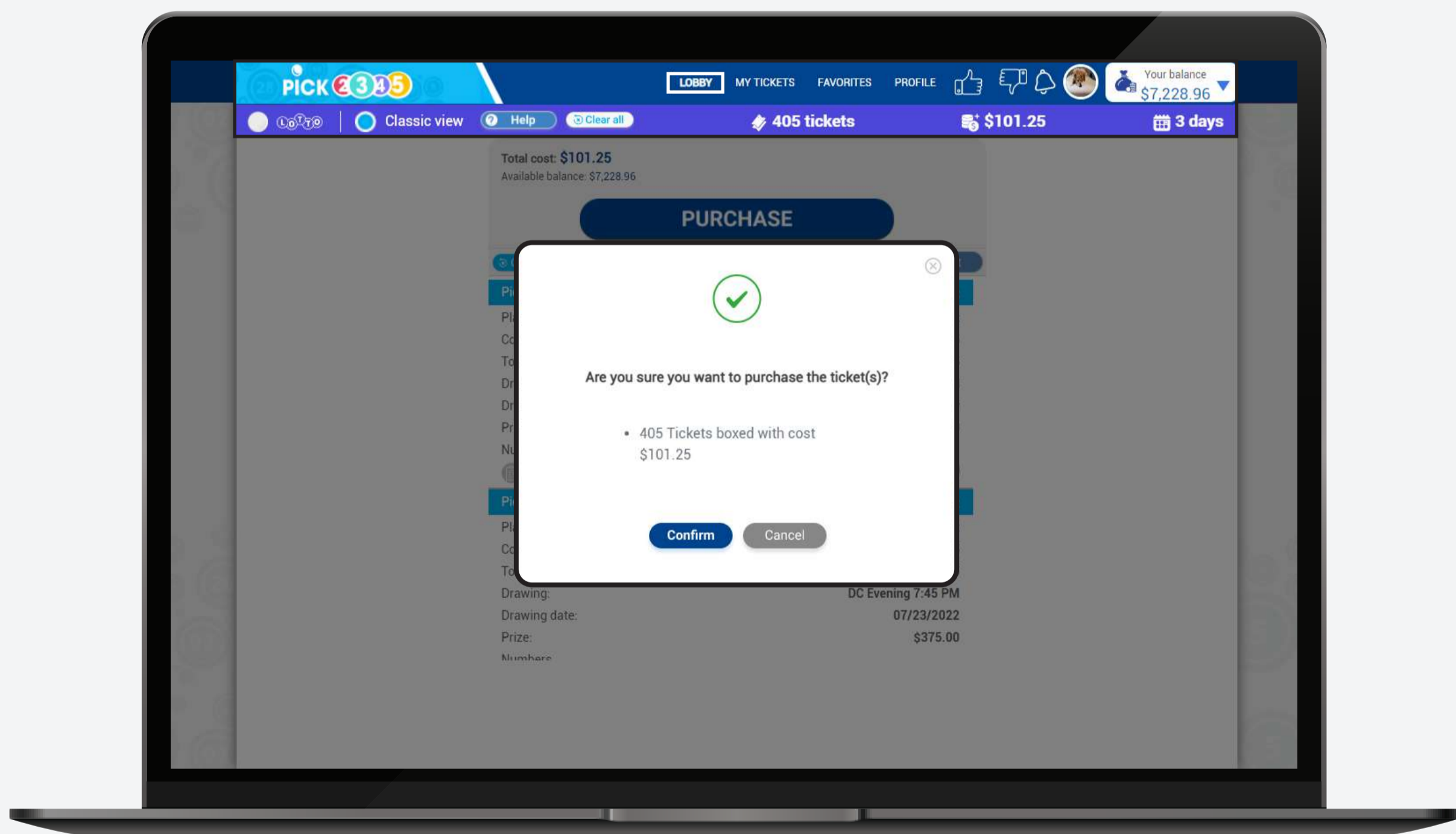
## Complete your purchase

If you are ready with your selections, press the **Submit** button. Make sure to double check your tickets before you click on **Purchase**.



Once you are ready to buy your numbers complete the purchase by clicking on **Confirm**.

**Please keep in mind that all lotto tickets are final.**



Once the purchase is finalized, you can see your **pending tickets**.

